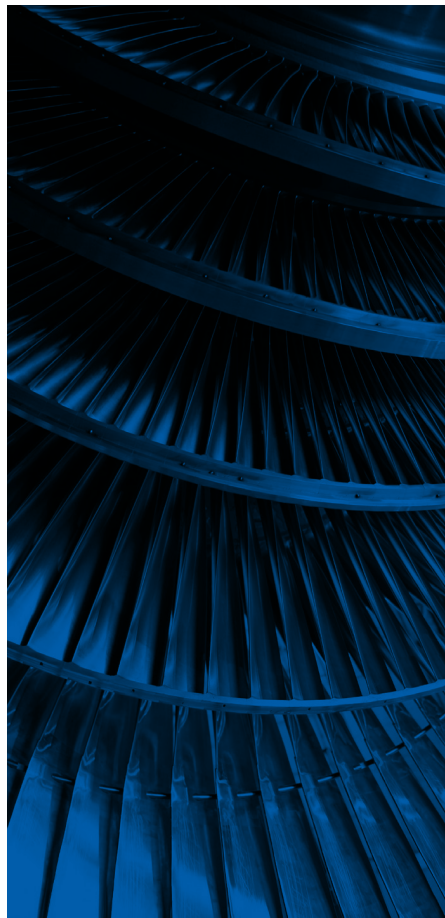
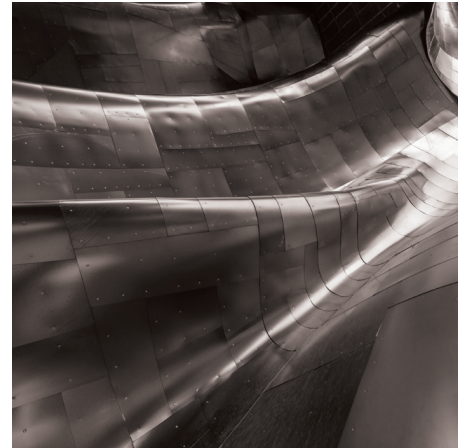




Garryson®



ABRASIVES

PRODUCT CATALOGUE

METRIC

INTRODUCTION



INTRODUCTION

With over 50 years experience, ATA is a global leader in the provision of high-end products. Our comprehensive portfolio offers a solution for every grinding and finishing application, optimising processes in terms of economic efficiency, reliability and safety. Our customers come from a wide variety of industries, including automotive, aerospace, foundries, metal fabrication, oil & gas, marine, medical, rail and power & energy.

INNOVATION

Continuous investment in customer and application driven product development, providing the most effective solutions

PEOPLE AND EXPERTISE

An experienced and skilled team of abrasive engineers, technical support and customer support teams, ensuring the best service

TOOL AND CONSUMABLE COMBINATIONS

Products can be combined with a comprehensive range of ATA Air Tools, ensuring maximum performance output



ATA Tools Ltd.,
IDA Business & Technology Park,
Killygarry, Cavan, Co. Cavan,
H12 DK46, Ireland

T: +353 (0) 49 432 6178
E: sales@atagroup.ie
W: www.atagroup.co

ATA Garryson Ltd.,
Spring Road, Ibstock,
Leicestershire, LE67 6LR,
United Kingdom

T: +44 (0) 1530 261 145
E: sales@atagarryson.com
W: www.atagroup.co

ATA Tools, Inc.
7 Ascot Parkway, Cuyahoga
Falls, Ohio 44223,
USA

T: +1 330 928 7744
E: sales@atatools.com
W: www.atagroup.co

Garryson®

Ordering Information

International **T:** +353 (0) 49 432 6178 **E:** sales@atagroup.ie
UK **T:** +44 (0) 1530 261 145 **E:** sales@atagarryson.com
US **T:** +1 330 928 7744 **E:** sales@atatools.com

ICON LIBRARY

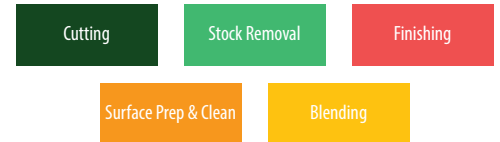
SPECIFICATIONS & FEATURES

Abrasive	
Bonding	
Bore Diameter Ø	
Colour	
Density	
Depth	
Diameter Ø	
Disc Holders	
Grain	
Hardness	
Holders	
Length	
Mandrel Part No.	
Max RPM	
Pack QTY	
Series	
Shank Diameter Ø	
Shape	
Spindle	
Structure	
Width	

SAFETY ICONS



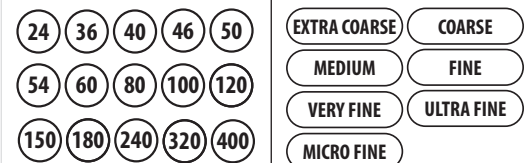
APPLICATIONS



PRODUCT DISCOUNT GROUP



GRIT SIZE & GRADE



BACKING PLATES

(Glass Fibre / Angled)
Type 29

(Glass Fibre / Flat)
Type 27

(Aluminium / Angled)
Type 29

(Glass Fibre / Angled)
Type 29

(Glass Fibre - Flexi)

Ordering Information

International **T:** +353 (0) 49 432 6178 **E:** sales@atagroup.ie

UK **T:** +44 (0) 1530 261 145 **E:** sales@atagarryson.com

US **T:** +1 330 928 7744 **E:** sales@atatools.com

(See price list for full list of part codes)

UNITISED WHEELS

Non-Woven Unitised Wheels | Mandrel |
Non-Woven Quickchange Unitised Wheels



UNITISED WHEELS - NON-WOVEN UNITISED WHEELS



MEDIUM

FINE

82

Finishing

Blending

Unitised Wheels



Non-Woven Unitised Wheels

- Ideal for a wide range of deburring, polishing and finishing applications
- Ideal for use on harder materials e.g. Titanium and Stainless Steel



Part No:		Diameter Ø	Depth	Bore Diameter Ø	Series	Density	Grain	Max RPM	Pack QTY
082200	MEDIUM	50mm	3mm	6.35mm	8AM	Hard	A/O	22,000	10
082201	MEDIUM	50mm	3mm	6.35mm	9AM	Extra Hard	A/O	18,000	10
082202	FINE	50mm	6mm	6.35mm	6AF	Medium	A/O	22,000	10
082204	FINE	50mm	6mm	6.35mm	2SF	Soft	SC	18,000	10
082205	MEDIUM	50mm	6mm	6.35mm	2AM	Soft	A/O	18,000	10
082207	FINE	50mm	12mm	6.35mm	4SF	Medium	SC	18,000	10
082208	FINE	50mm	12mm	6.35mm	2SF	Soft	SC	18,000	10
082209	MEDIUM	50mm	12mm	6.35mm	8AM	Hard	A/O	22,000	10

Garryson®

Ordering Information

International T: +353 (0) 49 432 6178 E: sales@atagroup.ie

UK T: +44 (0) 1530 261 145 E: sales@atagarryson.com

US T: +1 330 928 7744 E: sales@atatools.com

(See price list for full list of part codes)

UNITISED WHEELS - NON-WOVEN UNITISED WHEELS



COARSE

MEDIUM

FINE

82

Finishing

Blending

Unitised Wheels



Non-Woven Unitised Wheels

- Ideal for a wide range of deburring, polishing and finishing applications
- Ideal for use on harder materials e.g. Titanium and Stainless Steel



Part No:		Diameter Ø	Depth	Bore Diameter Ø	Series	Density	Grain	Max RPM	Pack QTY
082300	MEDIUM	75mm	3mm	6.35mm	8AM	Hard	A/O	18,000	10
082301	COARSE	75mm	6mm	6.35mm	8AC	Hard	A/O	18,000	10
082302	FINE	75mm	6mm	6.35mm	6AF	Medium	A/O	18,000	10
082303	FINE	75mm	6mm	6.35mm	4SF	Medium	SC	12,000	10
082305	MEDIUM	75mm	6mm	6.35mm	8AM	Hard	A/O	18,000	10
082306	MEDIUM	75mm	6mm	6.35mm	2AM	Soft	A/O	12,000	10
082307	FINE	75mm	12mm	6.35mm	4SF	Medium	SC	12,000	10

UNITISED WHEELS - MANDREL

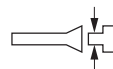
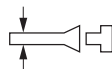


Unitised Wheels



Mandrel

- Reusable Spindle Mounted Mandrel



Part No:	Shank Diameter Ø	Bore Diameter Ø	Pack QTY
GMXM6	6mm	6mm	1

Garryson®

Ordering Information

International T: +353 (0) 49 432 6178 E: sales@atagroup.ie

UK T: +44 (0) 1530 261 145 E: sales@atagarryson.com

US T: +1 330 928 7744 E: sales@atatools.com

(See price list for full list of part codes)

UNITISED WHEELS - NON-WOVEN QUICKCHANGE UNITISED WHEELS



MEDIUM

FINE

82

Finishing

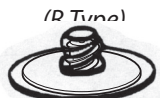
Blending

Unitised Wheels



Non-Woven Quickchange Unitised Wheels

- Ideal for a wide range of deburring, polishing and finishing applications
- Ideal for use on harder materials e.g. Titanium and Stainless Steel
- Quickchange R Type locking system for convenient and fast changeover of discs
- To be used with standard quickchange holder GQR050 or GQR075



Part No:		Diameter Ø	Depth	Series	Density	Grain	Max RPM	Pack QTY
082900	FINE	50mm	6mm	2SF	Soft	SC	18,000	10
082901	MEDIUM	50mm	6mm	6AM	Medium	A/O	18,000	10
082902	FINE	75mm	6mm	2SF	Soft	SC	12,000	10
082903	MEDIUM	75mm	6mm	6AM	Medium	A/O	12,000	10
082904	MEDIUM	75mm	3mm	8AM	Hard	A/O	12,000	10

Garryson®

Ordering Information

International T: +353 (0) 49 432 6178 E: sales@atagroup.ie

UK T: +44 (0) 1530 261 145 E: sales@atagarryson.com

US T: +1 330 928 7744 E: sales@atatools.com

(See price list for full list of part codes)

SAFETY INSTRUCTIONS

Abrasive Operations Safety User Information

WARNING:

In normal grinding and finishing operations, material that is being removed from the work piece, such as burs, scale, dirt, weld slag or other residue, will breakaway with considerable force. Also any coated abrasives, will cause cloth and abrasive grain to be released into the atmosphere.

The potential of serious injury exists for both the abrasive operator and others in the direct work area. To protect against this hazard, operators and others in the area **MUST** wear appropriate protective clothing and safety equipment such as **SAFETY GOGGLES** or **FULL FACE SHIELDS**, along with **PROTECTIVE CLOTHING AND RESPIRATORY EQUIPMENT**.

All operators must follow the safety instructions as well as common safety practices to reduce the likelihood or severity of physical injury.

Do not use wet



Wear safety glasses



Wear ear defenders



Wear protective gloves



Wear protective mask



Read instructions



1. SAFETY GOGGLES:

Approved safety goggles or full face shields **MUST BE WORN**.

2. GUARDS:

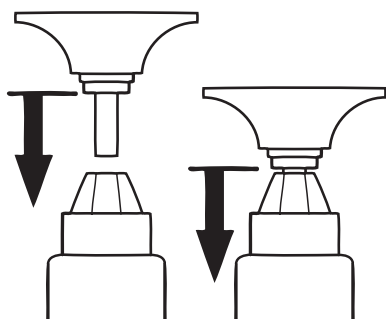
Always keep all guards in place on any equipment and read operating equipment instructions.

3. SPEEDS:

Always observe speed restrictions indicated on the abrasive product, containers, labels or printed material and the machine. **"MAX RPM"** means: Maximum Revolutions Per Minute. **THIS MUST NOT BE EXCEEDED UNDER ANY CIRCUMSTANCE.**

4. SHANK:

When using an abrasive product or accessory with a shank, make sure the shank is fitted securely into the machine with no more than 5mm overhang between the chuck or collet.



DO NOT ALLOW UNSAFE CONDITIONS:

Worn bearings, bent spindles, unbalanced machines, unusual application, operator abuse or inappropriate use are considered unsafe conditions and may cause the abrasive product to fail. Specifically with bonded abrasives a hard impact may damage the product. Additionally, bonded abrasives must be used in accordance to their specific use-by date. Do not use, or continue to use, an abrasive product which is functioning improperly (i.e. out-of-balance, etc) as this increases the possibility for the abrasive to fail and cause injury. Any failure or unsafe condition should be evaluated and corrected immediately.

NOTE:

Safety data and instructions are typical and should not be construed as complete for the abrasive product and the equipment being used. Safety procedures may vary and should be specific to the equipment being used, speeds of operations, material being finished, selected abrasives, and other parameters.

International Offices

t: +353 (0) 49 432 6178
f: +353 (0) 49 432 6298

e: sales@atagroup.ie
w: www.atagroup.co

ATA Tools Ltd., IDA Business & Technology Park,
Killygarry, Cavan, Co. Cavan, H12 DK46, Ireland

UK Offices

t: +44 (0) 1530 261 145
f: +44 (0) 1530 262 801

e: sales@atagarryson.com
w: www.atagroup.co

ATA Garryson Ltd., Spring Road, Ibstock,
Leicestershire, LE67 6LR, United Kingdom

US Offices

t: +1 330-928-7744
f: +1 330-849-2977

e: sales@atatools.com
w: www.atagroup.co

ATA Tools Inc., 7 Ascot Parkway,
Cuyahoga Falls, Ohio 44223, USA

